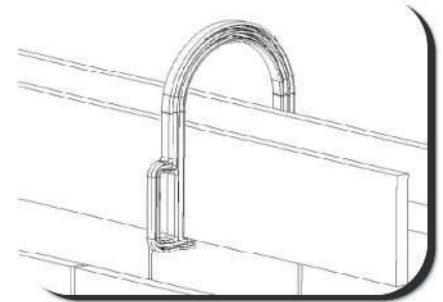
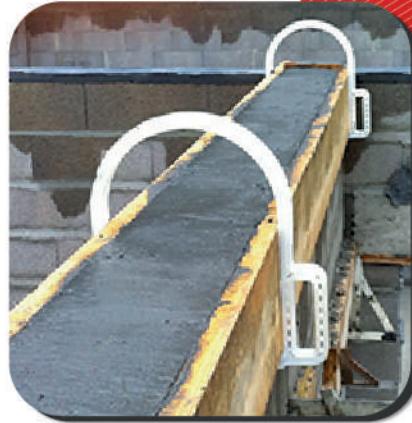


NEW

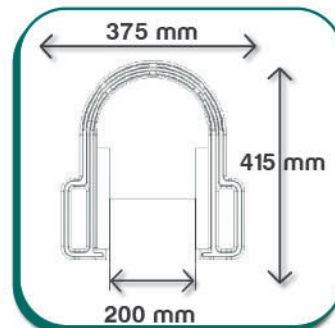


izirase

- **CLAMP TO REALIZE FORMWORKS**
- One worker alone can prepare the formwork, blocked by pressure.
- Lightweight, simple to use and clean
- Recyclable, no risk of oxidation
- Improves security, no risk of injury

CHARACTERISTICS:

Reference	Izirase
Material	PA 6
Dimensions (mm)	415 X 375 For 20 cm formwork width
Weight	650g
Packaging	10 units per box 400 units per pallet
Colour	White



MECHANICAL CHARACTERISTICS:

Density: 970 g/cm³
Elasticity modulus: 3 200 Mpa

Vicat degree: 200 °C
Shock resistance: 10 kJ/m²

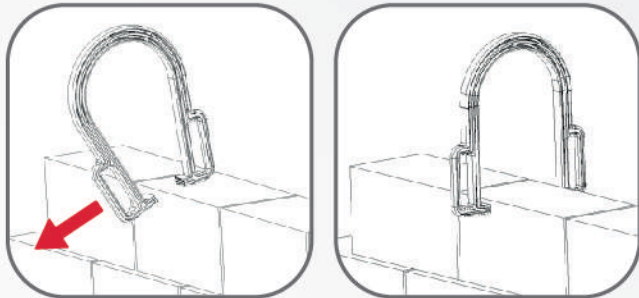


USE:

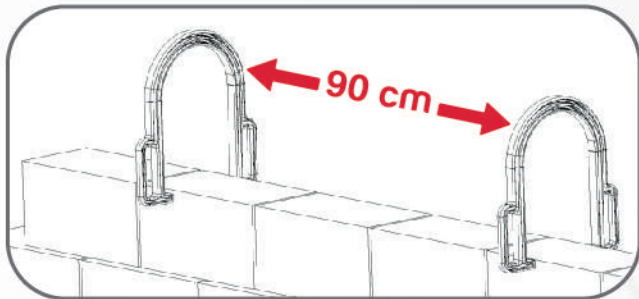
Injected polyamid clamp designed to substitute metallic clamp.

CINDER BLOCK 20 CM

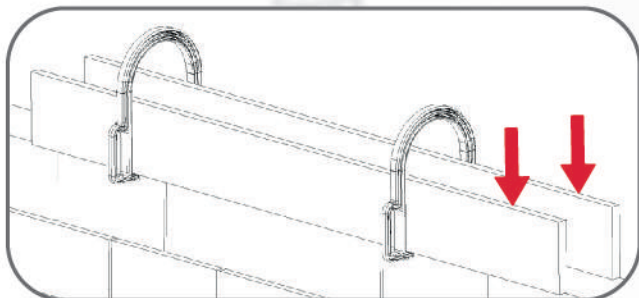
Put the **IZIRASE** on the top of the cinder block pulling on the handle.



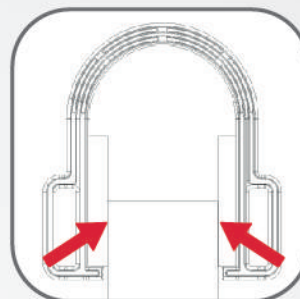
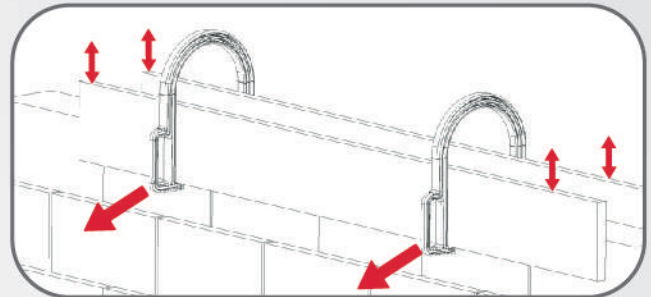
Put one **IZIRASE** every 90 cm.



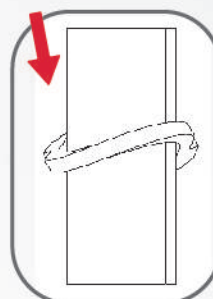
Insert the boards for the formwork.



Adjust the height and the level with a hammer.



Check the support of the boards against the cinder blocks.



To disassemble, pull on one of the side of the IZIRASE to twist it and pull on the handle.

